



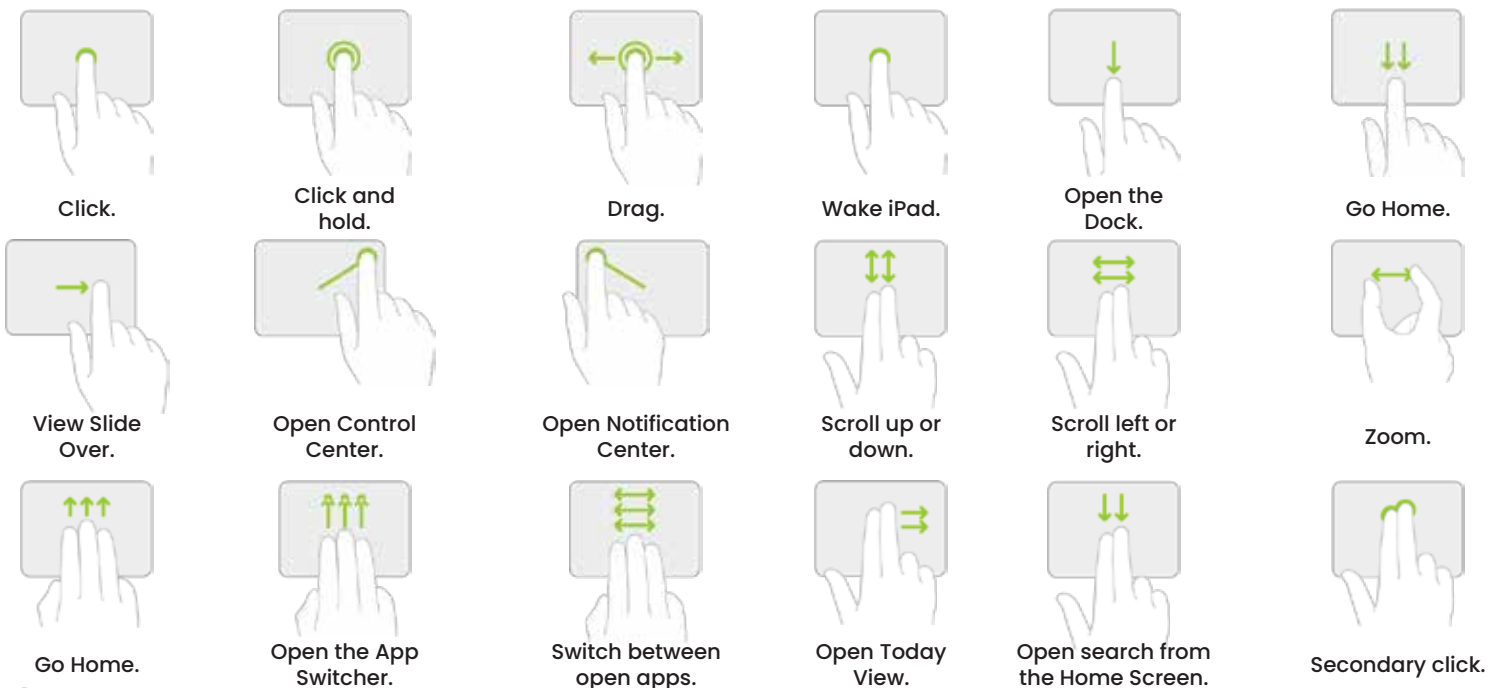
Scan for Additional Product Details

## Keyboard Features:

- 1 Esc
- 2 Screen Brightness Down
- 3 Screen Brightness Up
- 4 Multitasking Window
- 5 Search
- 6 On Screen Keyboard
- 7 Disable Trackpad
- 8 Previous Track
- 9 Play/Pause
- 10 Next Track
- 11 Volume Mute
- 12 Volume Down
- 13 Volume Up
- 14 Lock iPad
- 15 Switch Language
- 16 Trackpad
- 17 USB-C 2.0 Charging Port
- 18 3.5mm Audio Jack



## Trackpad Gestures:





### Compatibility:

iPad 10th 10.9 inch 2022 (A2696/A2757/A2777)


### Preassembly:

Before installation, ensure all packaging is removed from the iPad and the Rugged Keyboard.

At this time, adhere any asset tags or identification cards to the back of the iPad

- IMPORTANT!** Unplug the USB-C connector from the iPad case ensuring it does not obstruct the iPad installation.
- Ensure the USB-C cable is securely seated inside its channel in the case before inserting iPad.

### Installation:

- Starting with the bottom right corner, firmly press the iPad into the case.
- Firmly press the top of the iPad into the case. Ensure all four corners are securely holding the iPad.
- With the iPad correctly installed, insert the USB-C connector back into the case opening. The connector will align and plug into the iPad's USB-C port
- To check that the keyboard is properly connected, the iPad will display the USB connection symbol in the top right corner of the display. 

### iPad Removal:

- IMPORTANT!** Unplug the USB-C connector from the iPad and case. If the connector is not fully unplugged, it could cause damage to the iPad and or USB-C cable.
- Starting the top left corner, firmly press the case back and away from the iPad.
- Release the bottom edge and any remaining corners.
- The iPad will easily remove once all corners are released.

### Charging the iPad:

- Insert the USB-C charging cord (not included) into a power source. Connect the opposite end into the USB-C port on the right side of the keyboard. Charging level can be monitored from the iPad screen.,

### Safety/Caution:

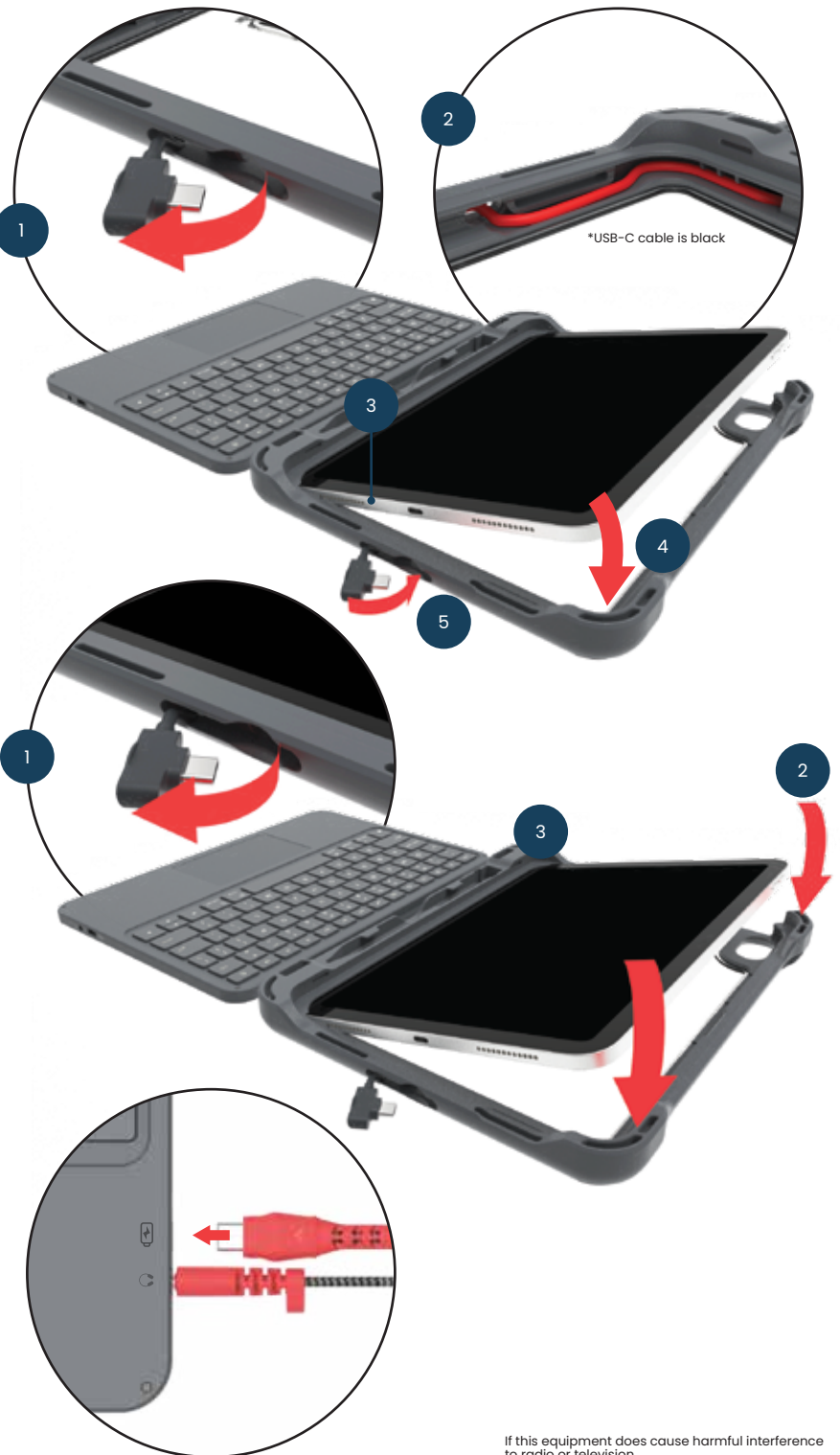
**DO NOT SPRAY CLEANER DIRECTLY ON CASE OR KEYBOARD** - Spray cleaning liquid onto a cloth and wipe. Microfiber cloths can be used effectively with just water, however non-toxic or chemical cleansers that do not contain bleach can be used. Ensure the case is completely dry before storing.

Keep the keyboard away from sharp objects  
Do not place heavy objects on the keyboard  
Keep away from microwave items  
Do not force or distort the keyboard  
Keep away from oil, chemical, or other liquid items.

**DO NOT ATTEMPT TO DISASSEMBLE** - For service by a trained technician, please reach out to customer support team: [info@brenthavenhq.com](mailto:info@brenthavenhq.com)

### Keyboard Specifications:

Working Voltage	5V	Number of Keys	78 Keys
Working Current	≤45mA	Charging Port	USB-C
Working Time	Based on tablet power usage hours	Operating Temperature	-10°C - 55°C
Button Life	5 Million Taps	Key Pressure	50g-70G
Sleeping Current	≤3.5mA		



This device complies with part 15 of the FCC Rules. Operation is subject to the following two conditions: (1) this device may not cause harmful interference, and (2) this device must accept any interference received, including interference that may cause undesired operation. Any changes or modifications not expressly approved by the party responsible for compliance could void the user's authority to operate the equipment.

NOTE: This equipment has been tested and found to comply with the limits for a Class B digital device, pursuant to Part 15 of the FCC Rules. These limits are designed to provide reasonable protection against harmful interference in a residential installation. This equipment generates, uses and can radiate radio frequency energy and, if not installed and used in accordance with the instructions, may cause harmful interference to radio communications. However, there is no guarantee that interference will not occur in a particular installation.



If this equipment does cause harmful interference to radio or television reception, which can be determined by turning the equipment off and on, the user is encouraged to try to correct the interference by one or more of the following measures:

- Reorient or relocate the receiving antenna.
- Increase the separation between the equipment and receiver.
- Connect the equipment into an outlet on a circuit different from that to which the receiver is connected.
- Consult the dealer or an experienced radio/TV technician for help. The device has been evaluated to meet general RF exposure statement. The device can be used in portable exposure conditions without restriction.

Warning: Changes or modifications to this unit not expressly approved by the party responsible for compliance could void the user's authority to operate the equipment.



## Rugged Keyboard – Wire Harness Replacement




Scan for Additional  
Product Details

### Remove the back cover:

Using a phillips head screwdriver, remove the 2 screws turning counter-clockwise

1. **IMPORTANT!** Unplug

### Unclip the wire connector:

3. Starting with the bottom right corner, firmly press the iPad into the case.
4. Firmly press the top of the iPad into the case. Ensure all four corners are securely holding the iPad.
5. With the iPad correctly installed, insert the USB-C connector back into the case opening. The connector will align and plug into the iPad's USB-C port
6. To check that the keyboard is properly connected, the iPad will display the USB connection symbol in the top right corner of the display. 

### iPad Removal:

1. **IMPORTANT!** Unplug the USB-C connector from the iPad and case. If the connector is not fully unplugged, it could cause damage to the iPad and or USB-C cable.
2. Starting the top left corner, firmly press the case back and away from the iPad.
3. Release the bottom edge and any remaining corners.
4. The iPad will easily remove once all corners are released.



## Rugged Keyboard – Keyboard Replacement



Scan for Additional  
Product Details


### Preassembly:

Before installation, ensure all packaging is removed from the iPad and the Rugged Keyboard.

At this time, adhere any asset tags or identification cards to the back of the iPad

1. **IMPORTANT!** Unplug the USB-C connector from the iPad case ensuring it does not obstruct the iPad installation.
2. Ensure the USB-C cable is securely seated inside its channel in the case before inserting iPad.

### Installation:

3. Starting with the bottom right corner, firmly press the iPad into the case.
4. Firmly press the top of the iPad into the case. Ensure all four corners are securely holding the iPad.
5. With the iPad correctly installed, insert the USB-C connector back into the case opening. The connector will align and plug into the iPad's USB-C port
6. To check that the keyboard is properly connected, the iPad will display the USB connection symbol in the top right corner of the display. 

### iPad Removal:

1. **IMPORTANT!** Unplug the USB-C connector from the iPad and case. If the connector is not fully unplugged, it could cause damage to the iPad and or USB-C cable.
2. Starting the top left corner, firmly press the case back and away from the iPad.
3. Release the bottom edge and any remaining corners.
4. The iPad will easily remove once all corners are released.



# Brenthaven®

## Rugged Keyboard -Firmware Update



Scan for Additional  
Product Details


### Preassembly:

Before installation, ensure all packaging is removed from the iPad and the Rugged Keyboard.

At this time, adhere any asset tags or identification cards to the back of the iPad

1. **IMPORTANT!** Unplug the USB-C connector from the iPad case ensuring it does not obstruct the iPad installation.
2. Ensure the USB-C cable is securely seated inside its channel in the case before inserting iPad.

### Installation:

3. Starting with the bottom right corner, firmly press the iPad into the case.
4. Firmly press the top of the iPad into the case. Ensure all four corners are securely holding the iPad.
5. With the iPad correctly installed, insert the USB-C connector back into the case opening. The connector will align and plug into the iPad's USB-C port
6. To check that the keyboard is properly connected, the iPad will display the USB connection symbol in the top right corner of the display. 

### iPad Removal:

1. **IMPORTANT!** Unplug the USB-C connector from the iPad and case. If the connector is not fully unplugged, it could cause damage to the iPad and or USB-C cable.
2. Starting the top left corner, firmly press the case back and away from the iPad.
3. Release the bottom edge and any remaining corners.
4. The iPad will easily remove once all corners are released.