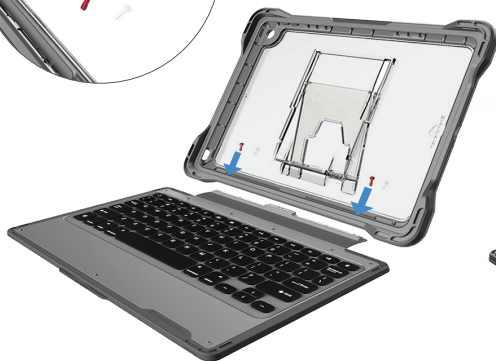
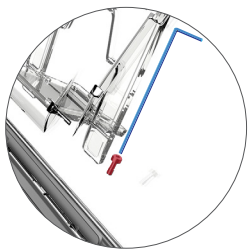




# ASSEMBLY - SMART CONNECT KEYBOARD - IPAD 10.2



- 1** Optional:  
For a permanent fit, use a hex key and two lock-down screws provided to affix the case to the keyboard.



- 2** Flex corners of case to insert iPad.



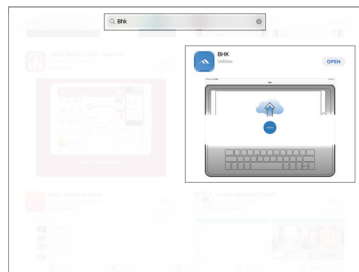
- 3** Optional:  
Attach Pencil holder to the top of the case. Line up the prongs on the bottom of the pencil holder to the slots on the main case.



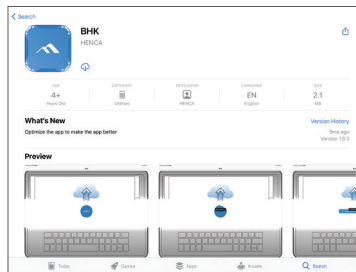
# APP INSTALL - SMART CONNECT KEYBOARD - IPAD 10.2

## APP MAINTAINS COMPATIBILITY WITH IOS UPDATES

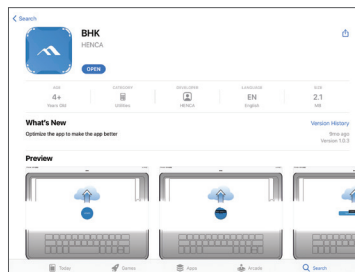
<https://apps.apple.com/us/app/bhk/id1517972321>



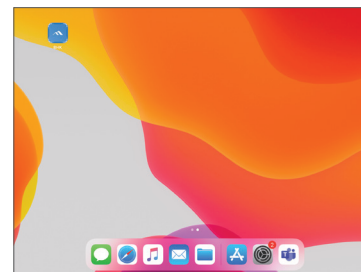
**1** Go to the Apple Store and search "BHK."  
The above app should appear.



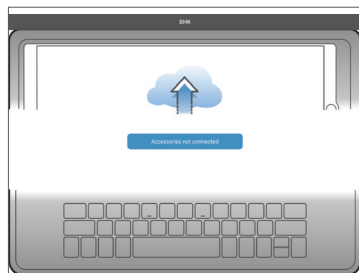
**2** Choose the download option.



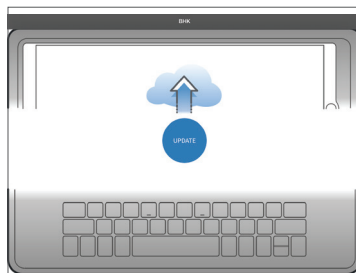
**3** Once the download is complete, press the Open button.



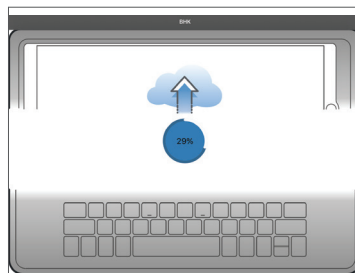
**4** The app will appear on the home screen, open the app.



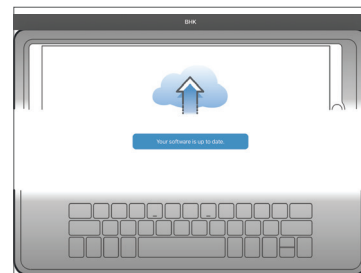
**5** If the keyboard is not connected to the device and case, connect at this time.



**6** The app may need to be updated, if this screen appears, press Update.



**7** Wait for update to complete.



**8** Keyboard is ready to use.